



OTECH

THERMOPLASTIC COMPOUNDING



CAPABILITIES

PRODUCTION

Customer Driven Compounding

- At OTECH we are committed to a strong investment in technology and research. Staffed with experienced polymer professionals and technicians, our laboratories deliver premier quality assurance and product development support.
- The innovation our customers seek is the driving force behind our constant development of new & improved solutions.
- Our skilled professionals are committed to working closely with your team to improve existing products, develop new ones, and ensure quick delivery of your order.
- Quality control. Quality assurance. New product development.



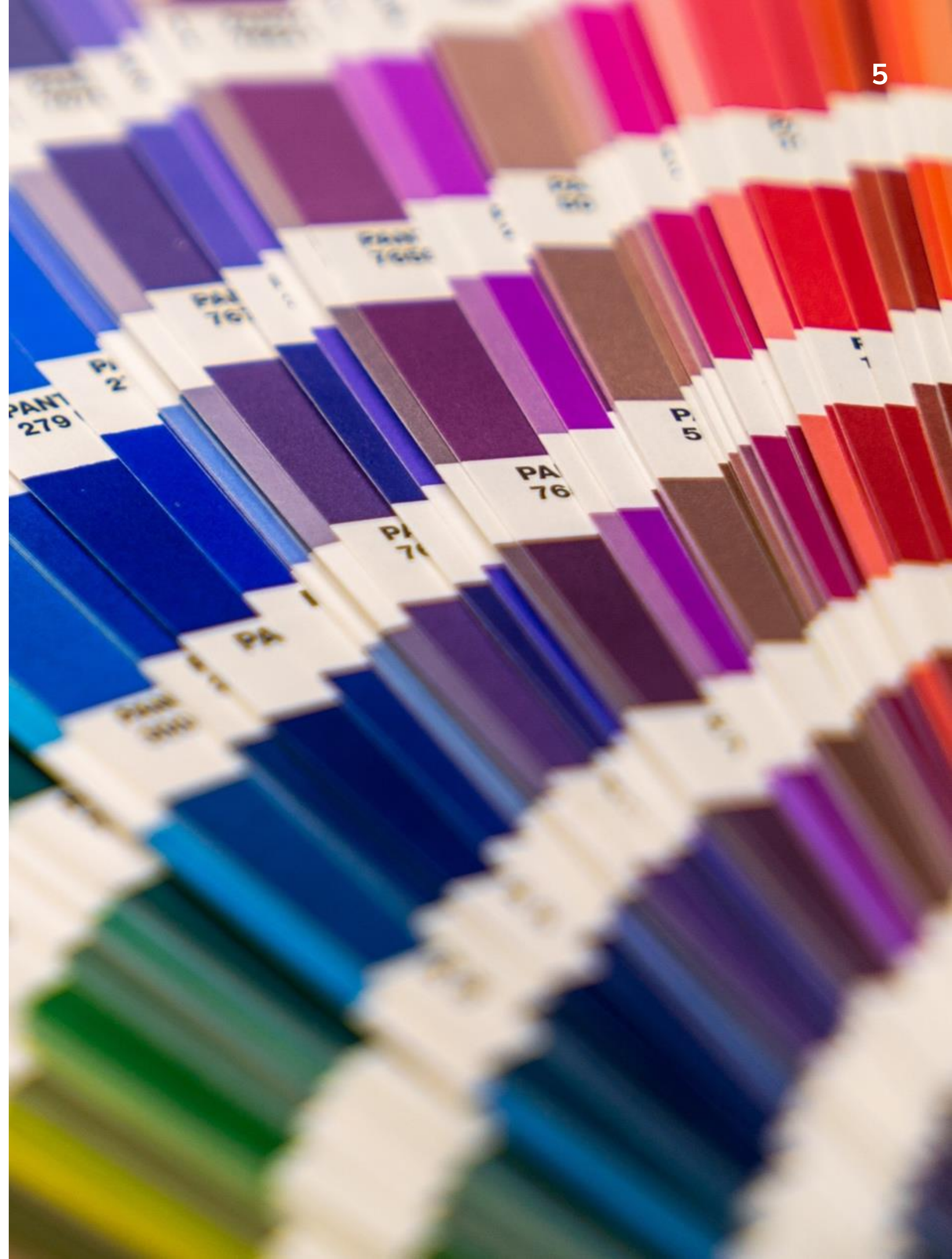


Thermoplastic Compounding

- OTECH boasts six production lines with a capacity of creating 100 million pounds annually for customers around the world. 100% of our products are made in the U.S.A.
- Excellent quality. Unbeatable price! OTECH stands 100% behind all of its products. Customers won't find better quality for the price anywhere else in the united states. We are an ISO 9001:2015 certified custom U.S. Manufacturer of specialty thermoplastic compounds featuring PVC, clear PVC, FR PVC, FDA PVC, NSF PVC, XL PVC, PVC alloys, expanded PVC, CPE, XL CPE, TPES, TPRS, TPOS, TPUS, XL EVA, FR polyolefins, zero halogens, and polymer alloy blends. OTECH supplies compounds to the wire and cable, footwear, profile extrusion, and molding markets.
- Toll compounding available.

Color Matching

Our color matching capabilities and equipment coupled with our knowledge of thermoplastic compounds and process makes your exacting color match requirements a reality. Our color development team will match your color from a variety of color standards such as raw materials, finished parts, Pantone® color swatches, and or Pantone® numbers. OTECH matches colors on time and on budget.



Custom Production Orders

- Each of our products is manufactured on one of our specialty designed production lines for quality and consistency.
- OTECH has a variety of different types of production equipment to meet the diverse compound requirements of our loyal customers. Every order is manufactured on one of our specially designed production lines depending on polymer type, order size, and pellet cut configuration.
- OTECH also offers toll compounding or compounds manufactured to a customer's proprietary formulations under secured agreements.
- All compounds are packaged in 50 lb. sample boxes, gaylord boxes, super sacks, and bulk trucks. We offer 3 pellet cuts round, octahedron, and barrel cuts. OTECH offers standard size round and barrel cut pellets and octahedron pellets sized in 3/32 or 1/8 inch.

LAB CAPABILITY

Lab Test Equipment

2 two - roll mills

2 Carver presses

Shore A and D Durometer test equipment

Specific Gravity test equipment

- Micromeritics Pycometer
- 2 Qualitest MD300S Electronic Densometer

Instron Tensometer

Limiting Oxygen Index test equipment

Benz Low Temperature Brittleness tester

Tinius Olsen Melt Flow Indexer

Brabender Plasticorder/Torque Rheometer

Atomic Absorption Spectrophotometer

1 inch Lab Extruder with a strip die

Spectrophotometer

3 Arbor presses

Taber abrasion tester

Ross Flex tester

Gas Chromatograph

FTIR

Arburg 50 ton molding machine

6 ovens

Cold box (-50 C)

Oil Testing

Dynisco Capillary Rheometer

I.E.T. Labs Megohmmeter/IR tester

Asker C Hardness tester

Lab Banbury mixer

Lab Test Equipment

2 two - roll mills

2 Carver presses

Shore A and D Durometer test equipment

Specific Gravity test equipment

- Micromeritics Pycometer
- 2 Qualitest MD300S Electronic Densometer

Instron Tensometer

Limiting Oxygen Index test equipment

Benz Low Temperature Brittleness tester

Tinius Olsen Melt Flow Indexer

Brabender Plasticorder/Torque Rheometer

Atomic Absorption Spectrophotometer

1 inch Lab Extruder with a strip die

Spectrophotometer

3 Arbor presses

Taber abrasion tester

Ross Flex tester

Gas Chromatograph

FTIR

Arburg 50 ton molding machine

6 ovens

Cold box (-50 C)

Oil Testing

Dynisco Capillary Rheometer

I.E.T. Labs Megohmmeter/IR tester

Asker C Hardness tester

Lab Banbury mixer

Lab Test Equipment

2 two - roll mills

2 Carver presses

Shore A and D Durometer test equipment

Specific Gravity test equipment

- Micromeritics Pycometer
- 2 Qualitest MD300S Electronic Densometer

Instron Tensometer

Limiting Oxygen Index test equipment

Benz Low Temperature Brittleness tester

Tinius Olsen Melt Flow Indexer

Brabender Plasticorder/Torque Rheometer

Atomic Absorption Spectrophotometer

1 inch Lab Extruder with a strip die

Spectrophotometer

3 Arbor presses

Taber abrasion tester

Ross Flex tester

Gas Chromatograph

FTIR

Arburg 50 ton molding machine

6 ovens

Cold box (-50 C)

Oil Testing

Dynisco Capillary Rheometer

I.E.T. Labs Megohmmeter/IR tester

Asker C Hardness tester

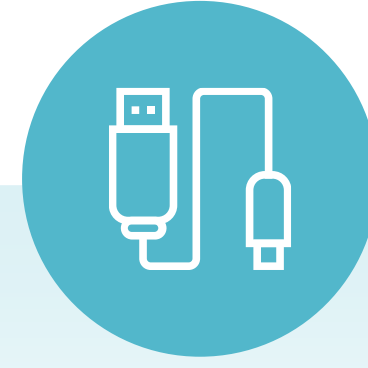
Lab Banbury mixer

MARKETS

OTECH Markets



TPE



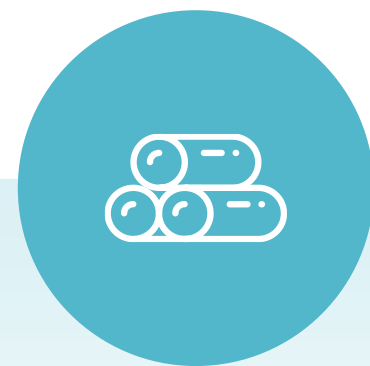
WIRE & CABLE



MEDICAL



CUSTOM
COMPOUNDING



PROFILE
EXTRUSION



FOOTWEAR



MOLDING



TPE

Dedicated & Automated TPE Compounding Lines

Custom TPE Compounds:

- Injection Molding & Extrusion
- FDA
- USP Class VI & others
- Clear, Filled or Color
- SBS, SEBS, TPV, Alloys & Blends, other

OTECH's custom TPE compounds are designed to meet the needs of your unique application. A consumer product will require a soft feel while resisting impact or abrasion. A medical application will demand safety, consistency and strict compliance. Industrial applications must function time and time again under compression or heat. The OTECH team will work to understand the demands of your application to effectively design and manufacture your custom TPE compound.

Plant Automation

Through newly engineered plant automation, OTECH delivers superior lot-to-lot traceability and consistency, and product purity through raw material and finished goods isolation in a fully controlled environment.



Wire & Cable

- OTECH develops, designs, and custom manufactures high-quality specialty PVC compounds, thermoplastic elastomers, and alloys for the electrical wire and cable industry. OTECH provides superior quality, industry-compliant products at competitive prices, and with unmatched service.
- Our engineering grade low-smoke zero-halogen wire and cable compounds and thermoplastics elastomers meet and exceed the most demanding requirements for new wire and cable applications.

Medical

- OTECH's medical grade PVC compounds are the emerging choice in the regulated market for formulations engineered for clear tubing, injection molded parts and film applications. All of OTECH's medical grade compounds are designed and produced for superior clarity, thermal stability and processability in its state-of-the-art segregated medical grade compounding facility.
- Through newly engineered plant automation, OTECH delivers superior lot-to-lot traceability and consistency, and product purity through raw material and finished goods isolation in a fully controlled environment. It offers a full array of EO, Gamma stable compounds for extrusion and injection molding applications.



Profile Extrusion

- OTECH's diversified product line meets your ongoing needs for consistent, competitively-priced extrusion compounds. Respected industry-wide for our new ideas and valuable solutions, we continuously introduce new technologies to enhance your product line.

- PVCs
- TPEs
- TPOs
- TPVs
- TPRs



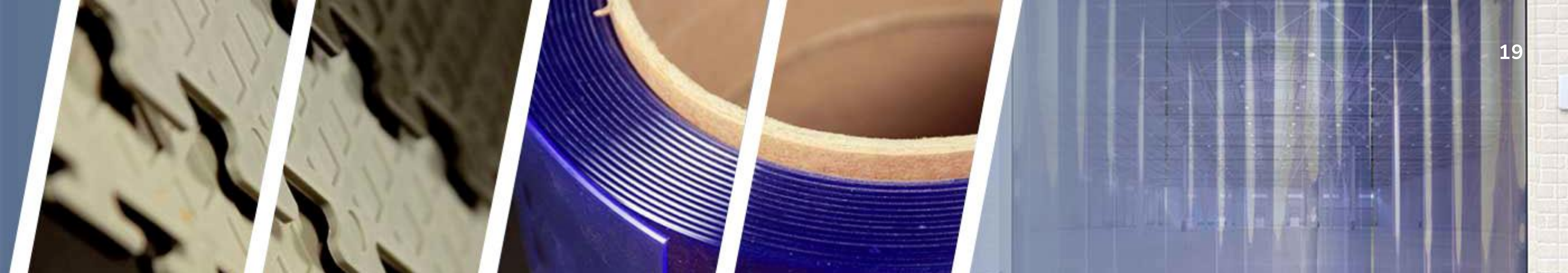
Footwear

- OTECH has a number of vinyl and non-vinyl options for footwear applications have been developed and feature some very unique properties. The property enhancements from these OTECH compounds for shoe and boot designs, improve wear, surface appearance, weight and chemical resistance.
- OTECH has several SBS and SEBS compounds being used in casual footwear applications including rainboots, utility boots and clogs. These compounds are a light-weight option that may replace some PVC applications.



Molding

- A specialty TPR and PVC molding compound can be designed by OTECH for any molding application. Specialty PVC elastomers, alloys, and TPEs offer alternative materials for “engineered” applications. Each molding compound developed by OTECH offers excellent processability for even the most complex shapes and exacting applications.
- TPR (thermoplastic rubber) and PVC (polyvinyl chloride) are suitable for a variety of uses and operations including, but not limited to:
 - Molding
 - Injection
 - Extrusion
 - Industrial parts



Custom Compounding

- OTECH has a long history of taking on projects where other compounders have already passed. We can work in multiple resin bases to achieve the target properties while developing flexible and semi-flexible compounds for your applications.
- OTECH has recently partnered with another independent compounder to refine a line of conductive and semi-conductive compounds in PVC to dissipate static in applications like floor tile, conveying systems, and others.
- OTECH'S custom compounding approach allowed us to develop specialty calendaring compounds designed for a variety of end uses. We offer PVC, flame retardant/smoke suppressed PVC, PVC/TPU, PVC/Elvaloys, clear PVC, and TPOs for multi-layer roofing, flooring, carpet runner, and clear curtain applications.



THANK YOU